

agileEMI Equipment Maintenance Institute: Reading Schematics & Symbols

Who should attend?

This course is primarily designed for technicians, field/customer engineers and equipment engineers who need to understand schematics and symbols as each relates to equipment maintenance.

Course Description

Offering a broad overview to schematics and symbols, this course provides students with real world examples of block diagrams, layout diagrams and design drawings, and how the combination can be used most effectively within the tool maintenance industry.

Course Modules & Objectives

After completing this course, students will be able to:

- Identify electrical, pneumatic and flow schematics
- Identify and describe the purpose of design drawings, block diagrams and layout diagrams

Introduction: Initial Discussion

- Safety elements
- Class schedule and objectives

Module One: Schematics

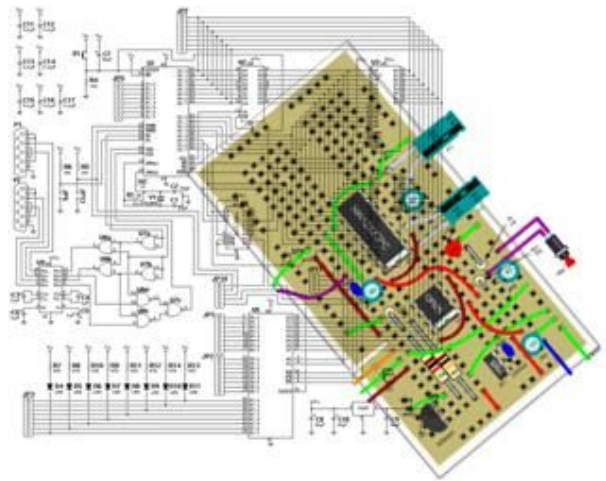
- Defining schematics
- Defining drawings (design drawing, block diagram, layout diagram)

Module Two: Symbols

- Electrical symbols
- Pneumatic symbols
- Flow symbols

Module Three: Using Schematics & Symbols

- Sheet identification
- Sheet references
- Tracing tips
- Sheet-to-sheet tracing



Module Review: Course Summary

- Create schematic descriptions
- Create design drawing, block diagram and layout diagram

Self and Peer Reviews

Registration Information

Prerequisites:

none

Course Length: 2 hours

Course Type: Instructor-led

Course Number: ATCP.SCHEM.101

about agileTCP

agileTCP (www.agileTCP.com) is a knowledge management and training solutions company based in Austin, Texas that provides technology-driven solutions by working with clients to transform, control and package business intellect. Since 1996, agileTCP has been meeting and exceeding the training and knowledge management needs of companies worldwide. Our proven techniques, methodology and subject matter expertise have maximized business value for our clients, including increased operational efficiencies of over 80%, reduced training costs of over 40% and substantially increased revenue across our client base. For more information on agileTCP, please visit www.agileTCP.com or call 512-732-2223.